

the COMMUNICATOR



The Monthly
Newsletter for

TIDEWATER VIRGINIA CHAPTER



SUMMER 2006

LIGHT RAIL TRANSIT, THE LARGEST PUBLIC WORKS PROJECT IN NORFOLK THIS CENTURY

SEPTEMBER 12, 2006

Final design is beginning this month on Light Rail Transit for the City of Norfolk. This presentation will give attendees an overview of the Norfolk Light Rail project past, present, and future. Join us and learn what Light Rail is, what Light Rail will mean for Norfolk, in terms of economic development, population increase, and ridership. Also, learn about the construction impacts in Downtown Norfolk and along the railway alignment.

Speakers: Marie Arnt, Community Relations Coordinator for Hampton Roads Transit (HRT)
John Coard, Capital Cost Project Manager at Hampton Roads Transit (HRT)

Marie Arnt's major job responsibility at HRT is the public involvement function for the Norfolk Light Rail Project and the Peninsula rapid Transit Project. She also continually updates the HRT website with information on both projects. She has held a variety of positions with Hampton Roads employers, since her graduation from Commonwealth College in 1983, and has been with HRT since 2002. She has served as President of her own Civic League and has served as President of the Norfolk Federation of Civic Leagues from October 2001 to May 2003. Prior to working at HRT, she served as a member of the Norfolk LRT Public Involvement Committee, representing the Norfolk Federation of Civic Leagues.

John Coard has an engineering background and has worked on several light rail systems. He is familiar with the light rail system in Baltimore and has worked for the Maryland Transit Authority. As a consultant for the HRT project for 5 years, he is familiar with the proposed local light rail system. He is now the Capital Cost Project Manager at HRT.

Chapter Meetings: 2nd Tuesday of Month

Location:

Holiday Inn Exec Center, Greenwich Road, VA Bch
11:30 am Registration (come early to network)
12 noon Lunch and Presentation (1 AIA LU)

Take Note of Local and Region CSI events....

Sept. 28, 2006	Certification Exams at MA/SE Region Conference in DC
Sept 28 - Oct 1, 2006	Bi-Region Conference - Middle Atlantic and South East Regions
Sept 2006	Registration for Spring CDT and Certification Exams Opens
Sept 2006	Exhibitor Registration for Hampton Roads Building Products Show Open
Oct 10, 2006	TVA Chapter Meeting <i>Eastern Va Medical School: Facilities Master Plan</i>
Oct 16-18 2006	CSI Academies Snowbird Utah
Nov 14 2006	TVA Chapter Meeting <i>Peninsula Town Center Project</i>
Dec 9, 2006	Pick and Sing at the Fry's Chapter Holiday Gathering Bring your favorite other.

RSVP for each meeting so we will have a place waiting for you!

Contact Shelton Clough at 757/617-7663 or sclough@cox.net to give a reservation or fax your reservation to Lee Fry at 757-422-4419 no later than COB the Friday before each meeting. **Thanks!**



PRESIDENT'S MESSAGE

Raymond Dery CSI CCPR AHC
TVA Chapter President

Here we go again! Start of a new year. Lots of things are in the planning and you are needed to keep things moving.

We have set a goal to have more than one person working a committee to accomplish the work of the chapter and allow those who have been working on your behalf to move up in leadership or to have a rest.

We've included information on each committee that operates within the Chapter. See where your interests lie and contact that chairman or a board member to see where you can lend a hand.

I look forward to seeing you in September if not before.

Ray

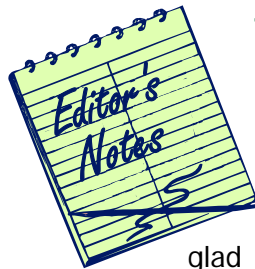
Hampton Roads Building Product Show

We are going back to the Holiday Inn for our annual Products Show and going to an earlier date - Feb 13, 2007.

We plan to still offer informative seminars and opportunities for networking. Our space will be limited so get registration information in early to reserve a booth to show your stuff.

By the way, booths and table tops aren't limited to Product Reps!. A/E's if you have an interesting project you want to show off, you can join in the fun too!

We hope to have more information at the Chapter meeting in September.



Margaret G. Chewning
FCSI CCS CCA

Don't know about you but I'm very glad school is getting ready to start. It also means the start of our Chapter year and we have a lot to look forward to coming up. There are a few items repeated from the Summer issue because I felt they bear repeating, such as the program calendar for the coming year. It's all lunches this year with very few exceptions, put them on your calendar to join us for lunch.

There is also good information on the workings of the Chapter and CSI in general. We have the listings of the standing committees that make our Chapter run. Be apart of it, the more hands the easier the load. And Sheldon Wolfe FCSI CCS CCA has given us an article on the workings of the Institute.

It's not too late to plan to go to the Region Conference the end of September. I've seen the program and it has lots of good information and some fun as well.

We have some local news on the Mag Lev project at ODU and a fun article from Brent Williams in the Chattanooga Chapter CSI

I'll be looking for you in September! *Margaret*

A Bi-Region Conference for Fall of 2006

"Middle Atlantic & Southeast Regions of CSI"

September 28 October 1, 2006

The Middle Atlantic & Southeast Regions of CSI would like to invite you to save the date to attend the first MAR & SER joint region conference to



be held in our Nation's Capital, Washington D.C.

For further information visit our conference site in the weeks to come:

<http://www.csi-building-diplomacy2006.org/>

MARK YOUR CALENDARS!

Tidewater Chapter Meeting Programs 2006-2007

The Tidewater Chapter of the Construction Specifications Institute announces its 2006-2007 Chapter Meeting Programs. The tentative speaker schedule for the entire year is as follows (subject to last minute modifications):

<u>Tuesday, October 10, 2006:</u>	Speaker:	Mark Babashanian, Vice President for Administration and Finance, Eastern Virginia Medical School
	Topic:	<i>" Eastern Va Medical School: Facilities Master Plan "</i>
<u>Tuesday, November 14, 2006:</u>	Speaker:	Kathy Grook, Senior Development Manager, Hampton Department of Economic Development
	Topic:	<i>"Peninsula Town Center Project" (Colliseum Mall Replacemnt)</i>
<u>Tuesday, December 9, 2006</u>		<i>"Pick 'n Sing" Party at the Fry Residence Evening Social, for members, spouses and significant others.</i>
<u>Tuesday, January 9, 2007:</u>	Speaker:	N.R.H.A.
	Topic:	<i>" What's On the Horizon? "</i>
<u>Tuesday, February 13, 2007:</u>		NO MEETING (HRBPS DATE)
<u>Tuesday, March 13, 2007:</u>	Speaker:	Tidewater Community College or ODU University Architect
	Anticipated Topic:	<i>Plans for the New School of Nursing (TCC) or Plans for the new Book Store (ODU)</i>
<u>Tuesday, April 10, 2007:</u>	Speaker:	Chesapeake Public Schools
	Anticipated Topic:	<i>" The A/E Selection Process"</i>
<u>Tuesday, May 8, 2007:</u>	Speaker:	Norfolk Department of Public Works
	Anticipated Topic:	<i>"The Process of Selecting Consulting Engineers "</i>
<u>Tuesday, June 12, 2007</u>		CSI Chapter Awards meeting (dinner)

For the Spring 2007 many of our ideas are not as yet nailed down. So if you have a topic or a speaker **you** want to hear not listed above, contact the Program Committee headed up by Rick Rivin to set it up.

Other Ideas in the wings:

Impact of the new General Assembly Funding Legislation on VDOT

Overview of the 2003 NFPA 101 Life Safety Code (With a Heads-Up on the Changes Coming in 2006)

The Future of Design-Build in Construction

What We Should Know About WiFi and How WireLess Technology Can Help



While you were on vacation...

The purpose of these articles is to tell our members about what is going on at Institute, and there is a lot to tell. During the last year, my first as an Institute director, I learned a lot about our board of directors, financial status, operations, staff, and more. I also had the opportunity to experience first-hand how our officers and directors work together to resolve differences, and I was impressed with how well it worked.

As we enter this new year, many important activities are in the works. This month, I'll say a little about several of the more significant ones, and as the year goes on, we'll look at some of them in more detail. As always, I'll try to explain the subject, and tell you the way I see it.

Remember - when I express my opinions, that's just what they are; I'm not speaking for the Board, but as your representative. That doesn't mean I won't do a little cheerleading now and then, but I won't try to fool you.

One of our top priorities is finding a new executive director. The Executive Director Search Task Team (EDSTT), comprising Tom Deines, Teri Hand, Jack Klemeyer, George White, Gary Betts, and Chairman Ross Spiegel, has been working through the summer. After discussions with a number of national search firms, they selected Korn/Ferry International, an executive-level recruiter headquartered in Los Angeles. In late August, Korn/Ferry made stakeholder calls, then interviewed one director from each CSI region, the Executive Committee, and CSI senior staff. Following those interviews, Korn/Ferry sent a draft position specification to the Board for review and comment. The schedule for the remainder of our search for an executive director is tight, but both the EDSTT and Korn/Ferry are confident it can be met.

- Specification published for public access: Specification appears on both CSI's and Korn/Ferry's websites.
- Screening and interview of potential candidates by Korn/Ferry: August through September.
- Task Team teleconference to review long list of candidates: Early October.
- Interviews by Task Team: October.
- Referencing verification by Korn/Ferry: Early November.

Presentation of selected candidates to Board: Mid-November.

Another consultant, The Greenway Group, is working with the Board to address issues that have been identified as critical to CSI's growth - branding, governance, and establishment of a Product Manufacturer's Council. The goal of this effort is to increase awareness of CSI and improve the way we run our organization.

Some of the work being done by other task teams includes:

- Governance: This team is looking at the size and composition of the Board, how directors and officers

are selected, and leadership development.

- MasterFormat Maintenance: One of the changes in the last MasterFormat update was the introduction of a maintenance team that will continually review use of MasterFormat and requests for new numbers and titles, and work with manufacturers and information integrators.
- SectionFormat/PageFormat: This group is actively working on SectionFormat, posting drafts to the CSI website for review.
- Sustainable Facility: This could be the beginning of a new Format document, this one designed to organize sustainable product information in a standard format.
- Terminology Initiative: Ideally, the same terms would be used for the same things everywhere. This task team is working toward that end, beginning with an investigation of existing glossaries, abbreviations, etc.

UDS. The UDS has been available for some time; this group is working on its promotion and maintenance. It is also working on education and certification programs for CAD technicians.

These are just a few of the programs we have going, and each has its own story. In the next couple of weeks, see what you can find out about a program you find interesting. If you don't find what you're looking for, or if you have comments about what you do discover, don't let it go - contact your region or Institute director. That's why we get the big bucks!

Sheldon Wolfe, RA, FCSI, CCS, CCCA

Institute Director, North Central Region, CSI

Maglev Project Moves Forward as Funding Continues

ODU's maglev project was recently written up in the *Virginian-Pilot*. The article discussed how Old Dominion's Office of Research has granted \$94,000 for the next year to keep research on the college's maglev transport moving forward. The goal is to produce a demonstration vehicle that levitates smoothly and travels a short distance down an elevated track that runs through campus within the next year. If this is accomplished, Jeremiah Creedon, research professor in aerospace engineering and ODU's director of transportation research, is optimistic that the University will be able to attract new research money to continue to improve the technology.

Thomas Alberts, professor of aerospace engineering, has been heading up the maglev project for the past two years. His team has developed a laboratory, built a small scale test sled, and added some equipment including new magnets and computers. Laboratory tests have progressed from a setup that uses one magnet to one that uses six, which is essentially half the chassis of the current maglev vehicle. According to the article, ODU scientists are so confident that they are close to a breakthrough that they have even been volunteering their time for the past month.



The Job Board

The following is a service of the Tidewater VA Chapter CSI to its members and readers of the Communicator. Members of CSI may post positions available or positions wanted. Contact the Editor for additional information regarding posting information on the Job Board.

TVA CSI Chapter Operating Committees and what You can do

We realize this is a repeat item from last month, but the Chapter and the Board need your help to run the chapter. Review the list below of our Operating Committees and what they do. Where you see an item of interest contact

the chair or any Board member if you can participate in the activities of any of these Committees. Refer to the list of Board members and Chairmen at the end of the Communicator for contact information.

Education

- Develop and promote an educational event during the Chapter year on a topic requiring a full day or half day seminar.
- Promote and encourage participation in Institute educational events and products (ie Webinars, CSI Academies, Education Program packages).
- Submit AIA LU's on behalf of attendees for Chapter meeting topics.

Products Show

- With the assistance of an event planner, oversee registration of exhibitor spaces
- Organize events including educational programs (in coordination with Education Committee) for the day of the Show, February 13, 2006.
- Note this is the Chapter's big fundraiser, this is one committee that definitely needs multiple hands.

Program

- Organize and schedule program topics for each chapter meeting.

Hospitality

- Make recommendations and arrangements for locations used for Chapter Meetings, Socials and other events.
- Receive reservations for Chapter Meetings and receive payment for lunch fees.
- Organize member greeters at meetings.

Membership

- Promote and coordinate Chapter activities pertaining to Institute membership programs.
- Track status of member information and renewal.

Academic Affairs

- Promote the Institute's Academic Affairs Program by developing relationships with local institutes of higher learning on behalf of the Chapter.
- Encourage Student Membership and development of Student Affiliates.
- Provide a resource for speakers on topics of interest and value to students in a construction/design curriculum.
- Promote student participation in Chapter events.
- Organize at least one program (pizza lunch) on each campus each year to promote CSI and the study of Construction Documents.

Certification

- Promote the Institute's Certification Program within the Chapter by encouraging certification exams
- Organize and provide sources of mentoring and education for potential Certification candidates.
- Develop and schedule a Fundamental Formats of Construction Documents Workshop on a yearly basis.

Technical -

- Promote the Institute's Technical programs
- Including the review and comments on the current updating and revisions to the SectionFormat and PageFormat,
- As well as the continuing review and addenda process for MasterFormat 04.

Publications -

- Maintain current information on the Chapter website.
- Produce and distribute a monthly informational newsletter - The Communicator.
- Develop special publications as needed.

Awards -

- Promote the recognition of exemplary work among the chapter membership through Chapter Awards and nominations for Region and Institute Awards.

Genus: "Oldfartius"

By: Brent Williams, CSI, CDT
Vice Chair, Publications Committee
Gulf States Region – Chattanooga Chapter

Our chapter is inhabited by a number of folks who fall under the Genus "Oldfartius" - those who seem to think that the only way to do things is the way that they've always been done or that "their way" is the ONLY way. This can be death to chapter growth. Nothing is worse for a group that depends on growth than cliquishness or elitism. Because of this, I've needed to be cautious in trying to implement new ideas.

First and foremost, remember that no shepherd ever made a sheep. The shepherd's (a.k.a. chapter leader's) job is to care for, educate and encourage the flock. If the shepherd does that job correctly, the flock (chapter members) will be out there "reproducing" of their own accord because of the support and knowledge gained from intelligent, enthusiastic leadership. People are drawn to other people that seem to have "something to offer" and CSI offers the most complete package of educational and organizational opportunities in the construction field. Look at the consumer marketplace which is saturated with media and companies who realize that the best way to reach people is through interpersonal relationships. You can see examples of this in the explosive growth of blogs, social networking through sites like MySpace, and mass customization by brands like Apple and Harley-Davidson. We have to constantly educate our member base about the value of CSI and how it relates to their professional lives.

Second, we need to realize that our members are human and have lives outside of CSI. Constant badgering from the Institute, the Region or local leaders to "devote more time" will simply lead to burnout. What has to happen is that our rank and file membership should see an example of excited, dynamic, motivated **membership** from the chapter leadership first. If the leaders are having fun as CSI members, then you can expect others to want to share in that fun.

In order to build excitement you can do a number of simple things:

1. Encourage your fellow members tirelessly. Be a cheerleader...everyone loves a pat on the back.

2. Educate your membership constantly...remind them how easy it is to mention CSI.
3. Use ALL of your chapter events... product shows, educational seminars, parties and meetings, as chances to invite someone new to see what we are about.
4. Award your members quickly and faithfully. Your chapter should offer an award to everyone that enrolls a new member and a special award to the person that enrolls the most new members in a given year.
5. Build esprit de corps by having the member responsible for the enrollment "pin" the new member in front of chapter meeting attendees. Give prizes. Gift certificates, local promotional items...anything. People love to be winners.
6. Leverage your growth. Be sure that your marketing committee is quick to send out press releases to local news media announcing both the new member and the sponsor. Post the release on your website and any other outlet that you may have access to.

Don't let **Oldfartieitus** strike YOUR chapter!

Remember "Experts" built the Titanic...
but "Amateurs" built the Ark.

For more information, contact the author at:
bw@coolsunlight.com

Have you been to CSI Net lately?
www.csinet.org

What can you do at CSINet?

Use the links below for easy access to CSINet's popular sections and features

- Info about *MasterFormat 2004 Edition*: www.csinet.org/masterformat
- Info about *the Project Resource Manual - CSI Manual of Practice*: www.csinet.org/projectresourcemanual
- Info about CSI Certification programs: www.csinet.org/certification
- Find out more about CSI Membership and join or renew now: www.csinet.org/joincsi
- Find a new job or employee in the *CSI Career Center*
- Connect with members and colleagues in *CSINet's Communities*
-

Masterformat 2004 Edition

by the Construction Specifications Institute (CSI) and Construction Specifications Canada (CSC)

Product Code: MF2004

CSI Member Price: \$109.00

Non Member Price: \$159.00

The most significant revision of MasterFormat in its 40 year history, the reengineering of this industry standard sets the present and future pace for organizing construction communication. MasterFormat 2004 Edition simplifies the process of determining where specific subject matter is located.

To order: www.csinet.org/masterformat

The Project Resource Manual -- CSI Manual of Practice, 5th ed.

The Construction Specifications Institute

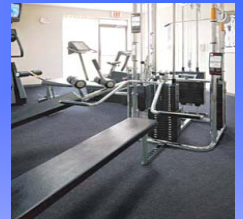
McGraw Hill Retail Price: \$295.00

CSI Members \$236.00

The authoritative resource for the organization, preparation, use and interpretation of Construction Documents encompassing the entire life cycle of a facility.

For more information visit www.csinet.org.

Entry Tiles



Rubber tiles-
VCT- Sheet
Vinyl- Cove Base
Luxury Vinyl
Tile

Mohawk Commercial

Carpet tiles



Solutions –
Solve it before
it happens

UPS Broadloom

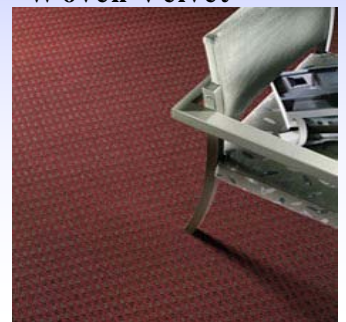


Warranties &
Performance-
Unequaled

Woven Interlock



Woven Velvet



EverSet® Fiber
Systems Lifetime
Stain Release
Water Only

Moisture Barriers:
UPS Bloc & Attached
Urethane Cushions



Thank you to our Chapter Sponsors

The following annual sponsorships are available for FY07

Master Level - \$1500

- Full year CSI dues, Institute and Chapter
- A booth or table at the HRBPS 07
- Full powerpoint slide that continually wraps at all monthly membership meetings
- A 1/2 page ad in The Communicator throughout FY07

Journeyman Level - \$1000

- Full year CSI dues, Institute and Chapter
- 50% off cost of table at the HRBPS 07
- Half PowerPoint slide shared with another sponsor at the same level that continually wraps at all monthly membership meetings
- A 1/4 page ad in The Communicator throughout FY07

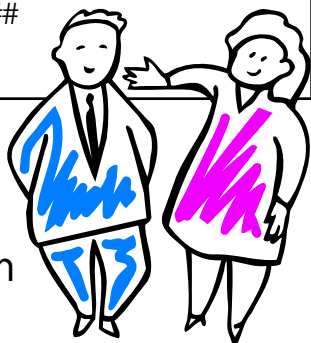
Apprentice Level - \$500

- Full year CSI dues, Institute and Chapter
- quarter PowerPoint slide shared with another sponsor at the same level that continually wraps at all monthly membership meetings
- A Business card ad in The Communicator throughout FY07

Novice level - \$250

Listing in Newsletter and Slides

For more information contact Linda Pressler at 757-515-5114 or online at www.csitidewatervirginia.org.##



There is room
for YOU!

TREMCO

Roofing & Waterproofing Specialists
Shelton N. Clough, P.E.
757-617-7663



SPEXRESOURCES LLC Specifications Consulting
for the Design Community

Margaret G. Chewing FCSI SCIP CCS CCCA

- Specifications Writing and Coordination using SpecsIntact and CSI Format Systems;
- Specifications Primer Workshops for design and construction personnel;
- Quality Assurance Review of Documents.



1334 Chela Avenue
Norfolk Virginia 23503

Cell: 757/581-0428
Ph/Fx: 757/588-9120

E-mail: mgcccs@spexresources.com

Deborah A. Cacace, P.E.
President

etc.

A Woman Owned Business Enterprise

Engineering and Testing Consultants, Inc.

509 Viking Drive
Virginia Beach 23462
Phone: 486-5522



Virginia Owned Virginia Made
Virginia's Finest Brickmaker

LAWRENCEVILLE BRICK

Donald R. Jernigan CSI CDT
Phone: 651-2583

Printing of the **Communicator**
Courtesy of **Ridgways Printing**
Cleveland Street, Virginia Beach

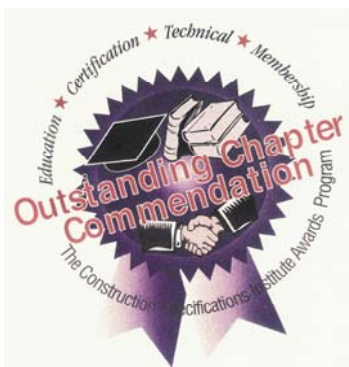
FY07 Chapter Board

OFFICERS

<u>OFFICERS</u>	<u>NAME</u>	<u>PHONE</u>	<u>E-MAIL</u>
President	Ray Dery, CSI CCPR	898-4662	rdery@widomaker.com
Past President	Linda Pressler CSI CDT	515-5114	lindapressler@yahoo.com
1st Vice President	Margaret G. Chewning FCSI CCS	581-0428	Mgcccc@spexresources.com
2nd Vice President	Richard A. Rivin FCSI CCS	455-5800	rrivin@clarknexsen.com
Secretary	Debbie Cacace CSI	486-5522	dcacace@engineeringandtesting.com
Treasurer	Lee Fry CSI	437-0807	fryWL@aol.com
Director 2007	Calvin Crofford CSI	322-4237	horace.crofford@navy.mil
Director 2007	Fred Bishop CSI	622-2828	Fbishop@rrmm.net
Director 2008	Ron Williams CSI CCCA	417-0140	rcwilliams@mmmdesigngroup.com
Director 2008	Sherri McMillion CSI PE	617-7663	sherri.mcmillion@navy.mil

COMMITTEE CHAIRS

Academic Affairs	Margaret Chewning FCSI CCS		
Awards	Fred Bishop RA CSI	622-2828	Fbishop@rrmm.net
By-Laws	Don Jernigan, CDT	651-2583	Donaldjernigan@cox.net
Certification	Margaret Chewning, FCSI CCS	581-0428	mgcccc@SpexResources.com
Convention	Kevin Casey CSI	428-5380	kevin_casey@mcgraw-hill.com
Publications – Web	Debbie Cacace PE CSI	486-5522	dcacace@engineeringandtesting.com
Publications —Newsletter	Margaret Chewning FCSI CCS	581-0428	mgcccc@spexresources.com
Education			
Hospitality	Shelton Clough CSI	617-7663	Mscclough@cox.net
Membership	Dick Chipchak CSI	814-1708	dchipchak@appliedctrls.com
Nominating	Past President's Council		
Product Show	Linda Pressler CSI CDT	515-5114	lindapressler@yahoo.com
Programs	Rick Rivin, FCSI, CCS	455-5800	rrivin@clarknexsen.com
Technical			



Presented to the
Tidewater Virginia Chapter
April 2004

About CSI
 * CSI is an individual membership technical society that serves *
 * as the premier integrating force for those that create and *
 * sustain the built environment, and as a primary gateway to *
 * resources for programs, services, and the exchange of *
 * knowledge. The Institute offers products and services that *
 * provide a common system of organization and presentation of *
 * construction information, enhancing communication among all *
 * construction industry disciplines. CSI's 18,000 members *
 * include architects, specifiers, engineers, contractors, product *
 * representatives, building owners, and facility managers. *
 * Founded in 1948, CSI is headquartered in Alexandria, Va., *
 * and has 143 local chapters nationwide. For more information *
 * about CSI, call 800-689-2900 or visit www.csinet.org. *

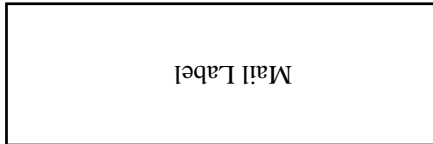
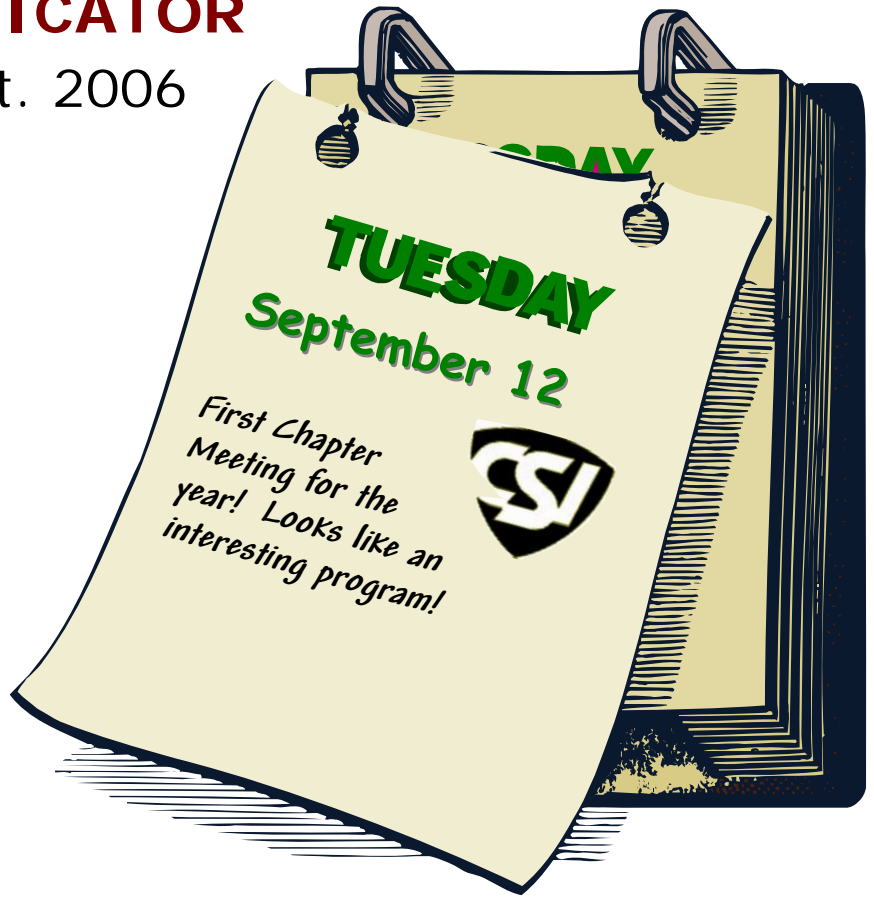


THE COMMUNICATOR

Sept. 2006

In this issue:

Article	pg
Sept 12 Meeting announcement	1
Take Note!	1
President's Message	2
Editor's Notes	2
Hampton Roads Building Product Show	2
Mark Your Calendars!	3
Mr. Wolfe goes to Washington	4
Mag Lev Project Update	4
The Job Board	5
Genus: Oldfartius	6
Sponsorship Opportunities	8
Chapter Board and Committee Contacts	9



THE COMMUNICATOR
 NEWSLETTER OF TIDEWATER VA CSI
 c/o M. Chewing FCSI CCS
 1534 Chela Ave
 Norfolk VA, 23503

